



South Kent

ENERGY PARK

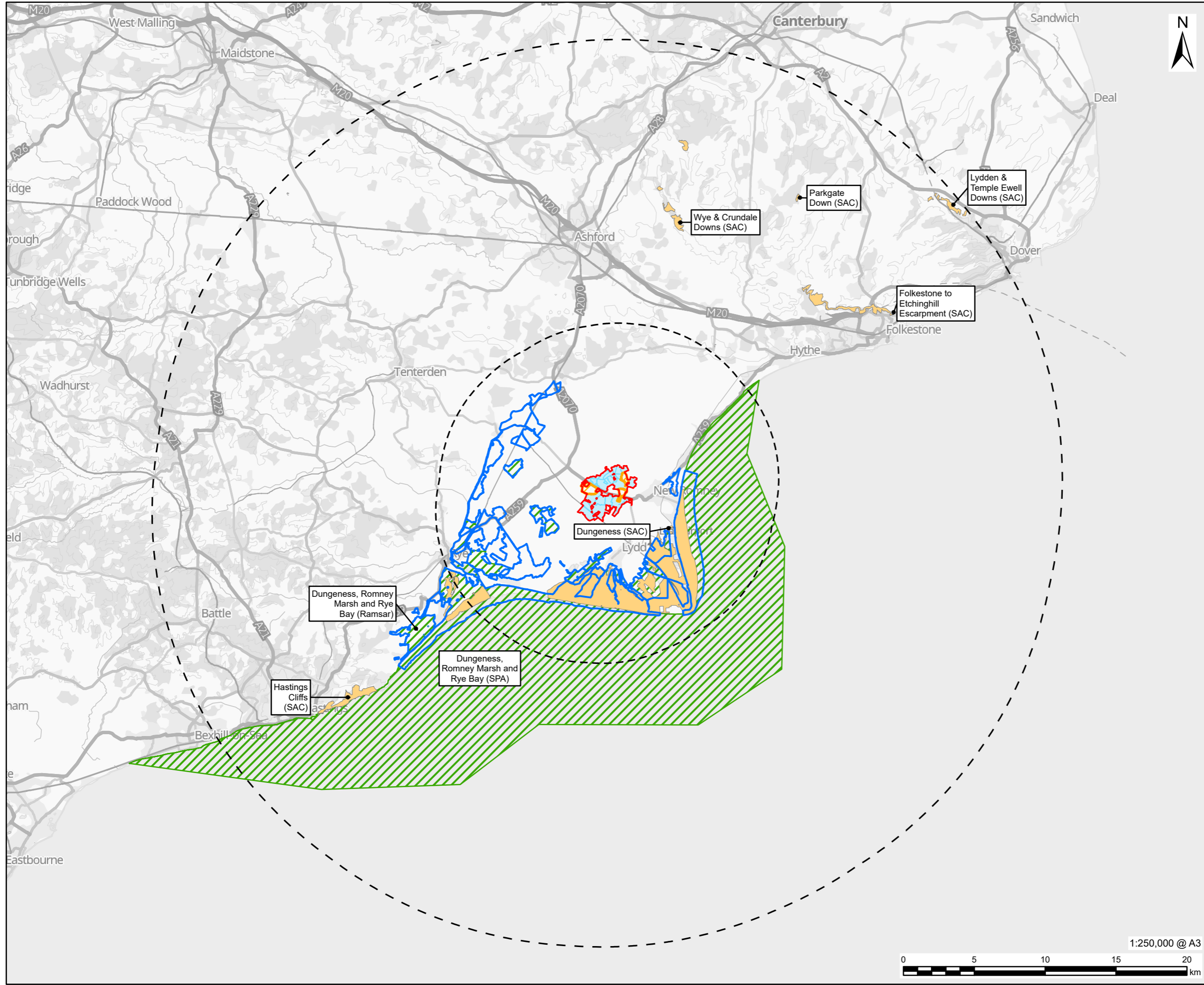
Planning Inspectorate Reference: EN0110035

Environmental Impact Assessment Scoping Report - Figures
June 2026



Table of Contents

PART 1	
Figure 1-1	Proposed Development Location Plan
Figure 2-1	Environmental Constraints
Figure 3-1	DCO Site Boundary and Land Use
Figure 6-1	DCO Solar Projects within 5 km of the Proposed Development
PART 2	
Figure 8-1	Designated Heritage Assets
Figure 8-2	Non-Designated Heritage Assets
PART 3	
Figure 9-1	Sites statutorily designated for their biodiversity value at an International (European) level up to 30 km from the DCO Site Boundary
Figure 9-2	Sites statutorily designated for their biodiversity value at a National or local level within 5 km of the DCO Site Boundary
Figure 9-3	Location of non-statutorily designated sites and priority habitats within 2 km of the DCO Site Boundary
Figure 9-4	Habitats within the DCO Site Boundary
PART 4	
Figure 10-1	Surface Water Features and their Attributes
Figure 10-2	Bedrock Aquifers
Figure 10-3	Groundwater Features and their Attributes
Figure 10-4	Fluvial and Tidal Flood Risk
Figure 10-5	Surface Water Flood Risk
PART 5	
Figure 11-1	Landscape and Visual Study Area
Figure 11-2	Zone of Theoretical Visibility (ZTV) DCO Site Boundary, North – Bare Earth
Figure 11-3	ZTV DCO Site Boundary, South – Bare Earth
Figure 12-1	Noise and Vibration Study Areas and Noise Monitoring Locations
Figure 13-1	Study Area for Socio-Economic Impacts
PART 6	
Figure 14-1	Predictive Agricultural Land Classification (ALC)
Figure 14-2	Soil Associations
Figure 15-1	Transport and Access Study Area
Figure 15-2	Existing Walking and Cycling Network
Figure 15-3	Bus Stops and Routes
Figure 15-4	Railway Stations
Figure 15-5	Traffic Survey Locations
Figure 17-1	Air Quality Study Area for South Kent Energy Park
Figure 17-2	Ground Conditions Study Area Boundaries



AECOM

PROJECT



CLIENT



CONSULTANT

AECOM Limited
3 Rivergate
Bristol, BS1 6EW
www.aecom.com

LEGEND

- DCO Site Boundary
- Main Site
- Interconnecting Areas
- 10km Study Area
- 30km Study Area
- Special Protection Areas (SPA)
- Special Areas of Conservation (SAC)
- Ramsar

NOTES

Contains OS data © Crown Copyright and database right 2026. Contains data from OS Zoomstack. All rights reserved. Ordnance Survey Licence AC0000808122.
© Natural England copyright. Contains Ordnance Survey data © Crown Copyright and database right 2025
Published using the Open Government License (OGL) version 3.0

ISSUE PURPOSE

Scoping Report

PROJECT NUMBER

60716220

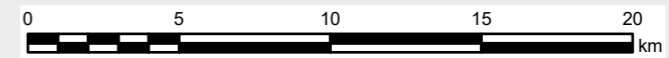
FIGURE TITLE

Sites statutorily designated for their biodiversity value at an International (European) level up to 30 km from the DCO Site Boundary

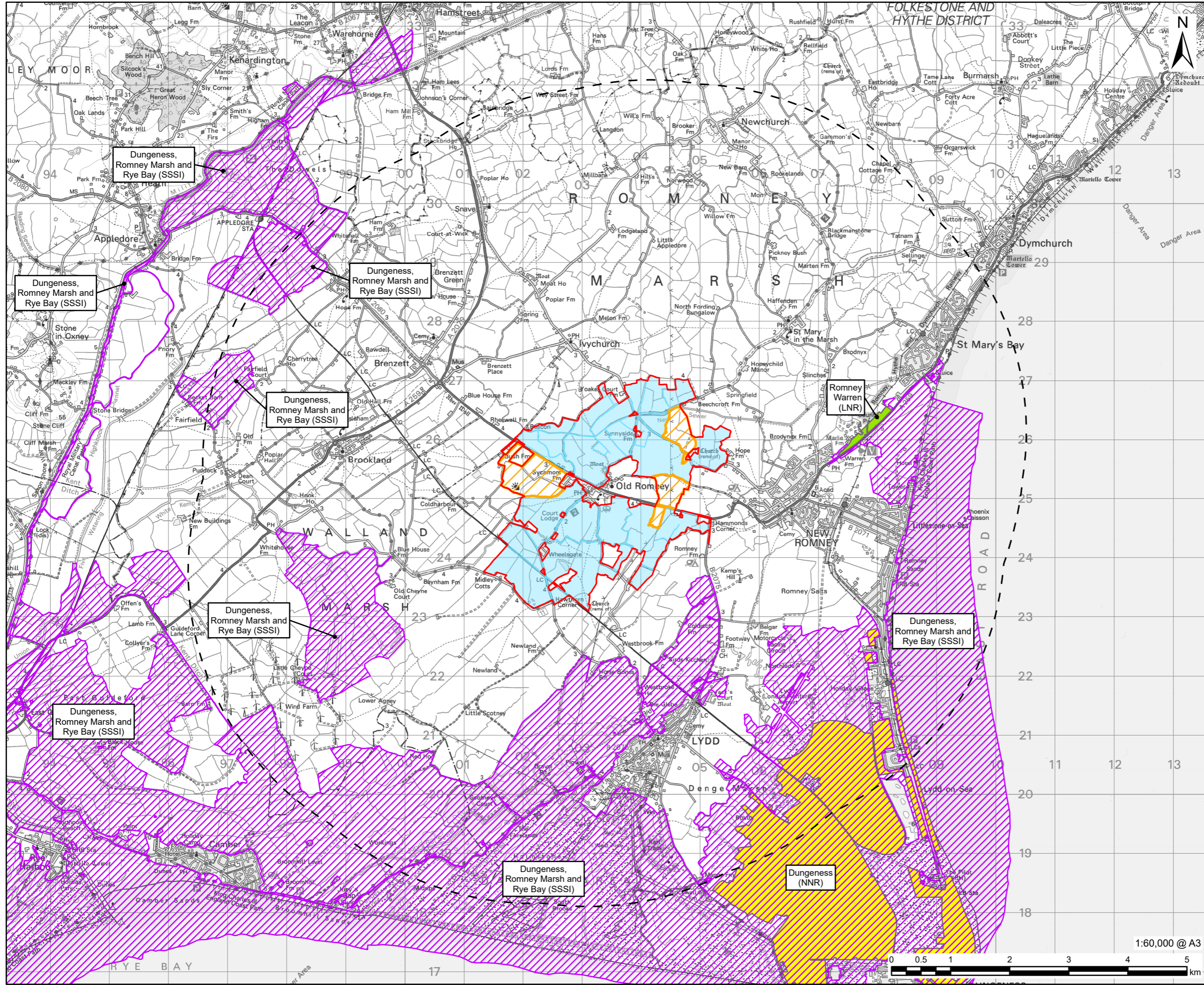
FIGURE NUMBER

Figure 9-1

1:250,000 @ A3



This drawing has been prepared for the use of AECOM's client. It may not be used, modified, reproduced or relied upon by third parties, except as agreed by AECOM or as required by law. AECOM accepts no responsibility, and denies any liability whatsoever, to any party that uses or relies on this drawing without AECOM's express written consent. Do not scale this document. All measurements must be obtained from the stated dimensions.



LEGEND

- DCO Site Boundary
- Main Site
- Interconnecting Areas
- 5km Study Area
- Sites of Special Scientific Interest (SSSI)
- National Nature Reserves (NNR)
- Local Nature Reserves (LNR)

NOTES

© Crown copyright and database rights 2025
Ordnance Survey AC0000808122.
© Natural England copyright. Contains
Ordnance Survey data © Crown Copyright
and database right 2025
Published using the Open Government
License (OGL) version 3.0

ISSUE PURPOSE

Scoping Report

PROJECT NUMBER

60716220

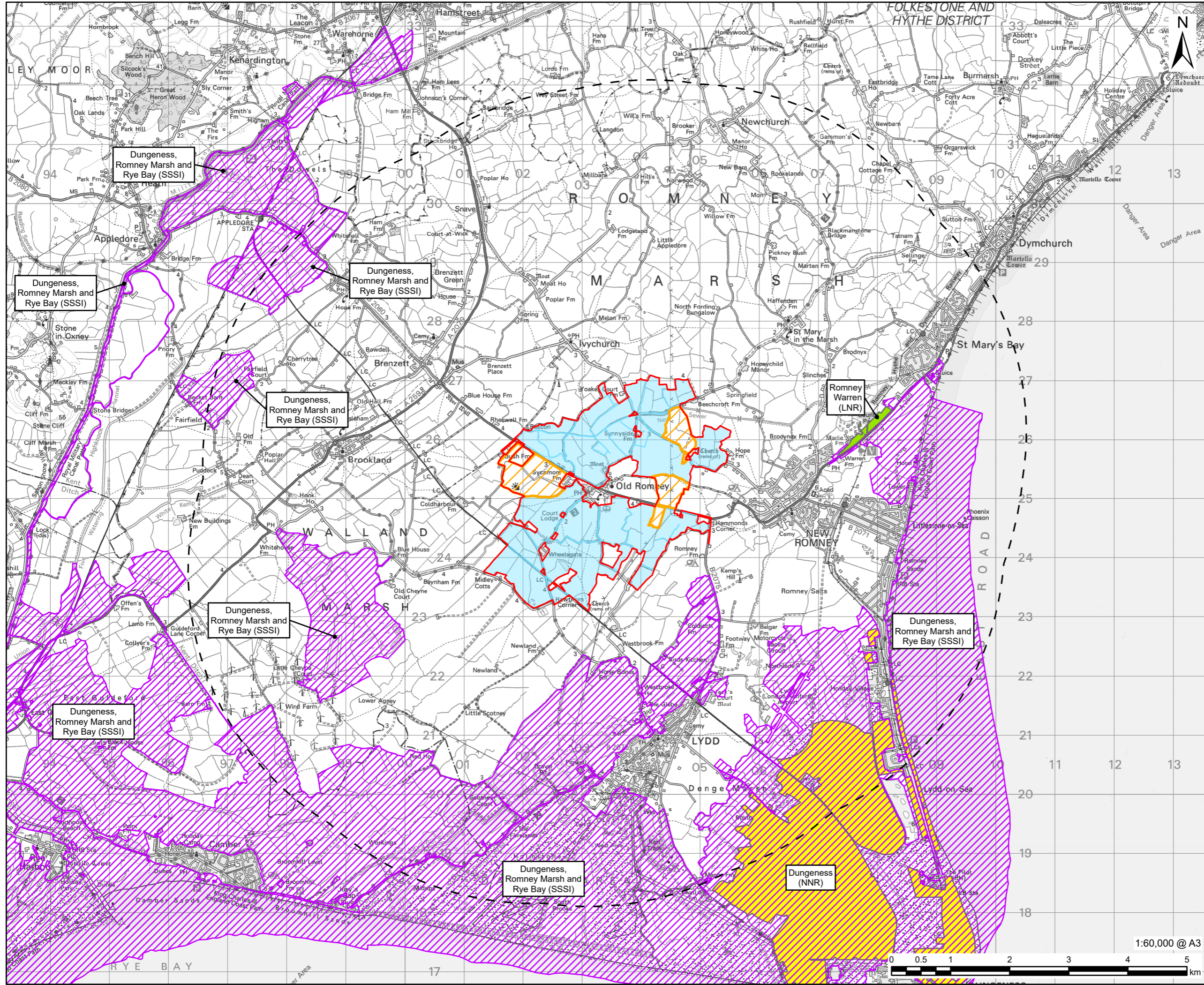
FIGURE TITLE

Sites statutorily designated for their
biodiversity value at a National or local
level within 5 km of the DCO Site
Boundary


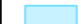

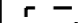



FIGURE NUMBER

Figure 9-2

This drawing has been prepared for the use of AECOM's client. It may not be used, modified, reproduced or relied upon by third parties, except as agreed by AECOM or as required by law. AECOM accepts no responsibility, and denies any liability whatsoever, to any party that uses or relies on this drawing without AECOM's express written consent. Do not scale this document. All measurements must be obtained from the stated dimensions.



LEGEND

	DCO Site Boundary
	Main Site
	Interconnecting Areas
	5km Study Area
	Sites of Special Scientific Interest (SSSI)
	National Nature Reserves (NNR)
	Local Nature Reserves (LNR)

NOTES

© Crown copyright and database rights 2025
Ordnance Survey AC0000808122.
© Natural England copyright. Contains
Ordnance Survey data © Crown Copyright
and database right 2025
Published using the Open Government
License (OGL) version 3.0

ISSUE PURPOSE

Scoping Report

PROJECT NUMBER

60716220

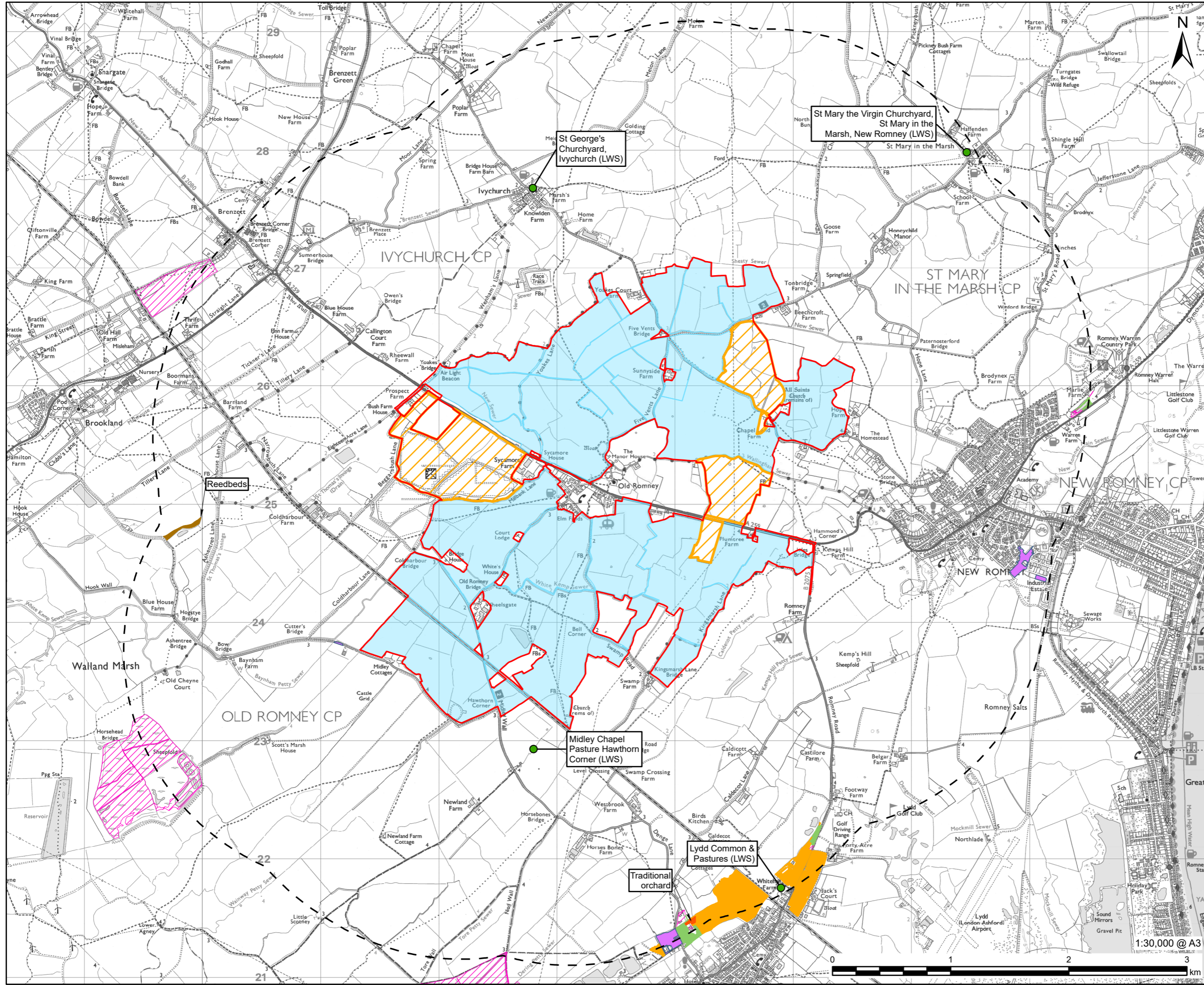
FIGURE TITLE

Sites statutorily designated for their
biodiversity value at a National or local
level within 5 km of the DCO Site
Boundary

FIGURE NUMBER

Figure 9-2

This drawing has been prepared for the use of AECOM's client. It may not be used, modified, reproduced or relied upon by third parties, except as agreed by AECOM or as required by law. AECOM accepts no responsibility, and denies any liability whatsoever, to any party that uses or relies on this drawing without AECOM's express written consent. Do not scale this document. All measurements must be obtained from the stated dimensions.



- DCO Site Boundary
 - Main Site
 - Interconnecting Areas
 - 2km Study Area
- Priority Habitat Inventory:
- Coastal and Floodplain Grazing Marsh
 - Coastal Vegetated Shingle
 - Deciduous Woodland
 - Reedbeds (Locations labelled)
 - Traditional Orchard (Locations labelled)
 - No Main Habitat but Additional Habitats Present

NOTES

© Crown copyright and database rights 2025 Ordnance Survey AC0000808122.
 © Kent County Council. Indicative Local Wildlife Site Location obtained from Kent County Councils KLIS Map (<https://webapps.kent.gov.uk/KCC.KLIS.Web.Sites.Public/ViewMap.aspx>).
 © Natural England copyright. Contains Ordnance Survey data © Crown Copyright and database right 2025
 Published using the Open Government License (OGL) version 3.0

ISSUE PURPOSE

Scoping Report

PROJECT NUMBER

60716220

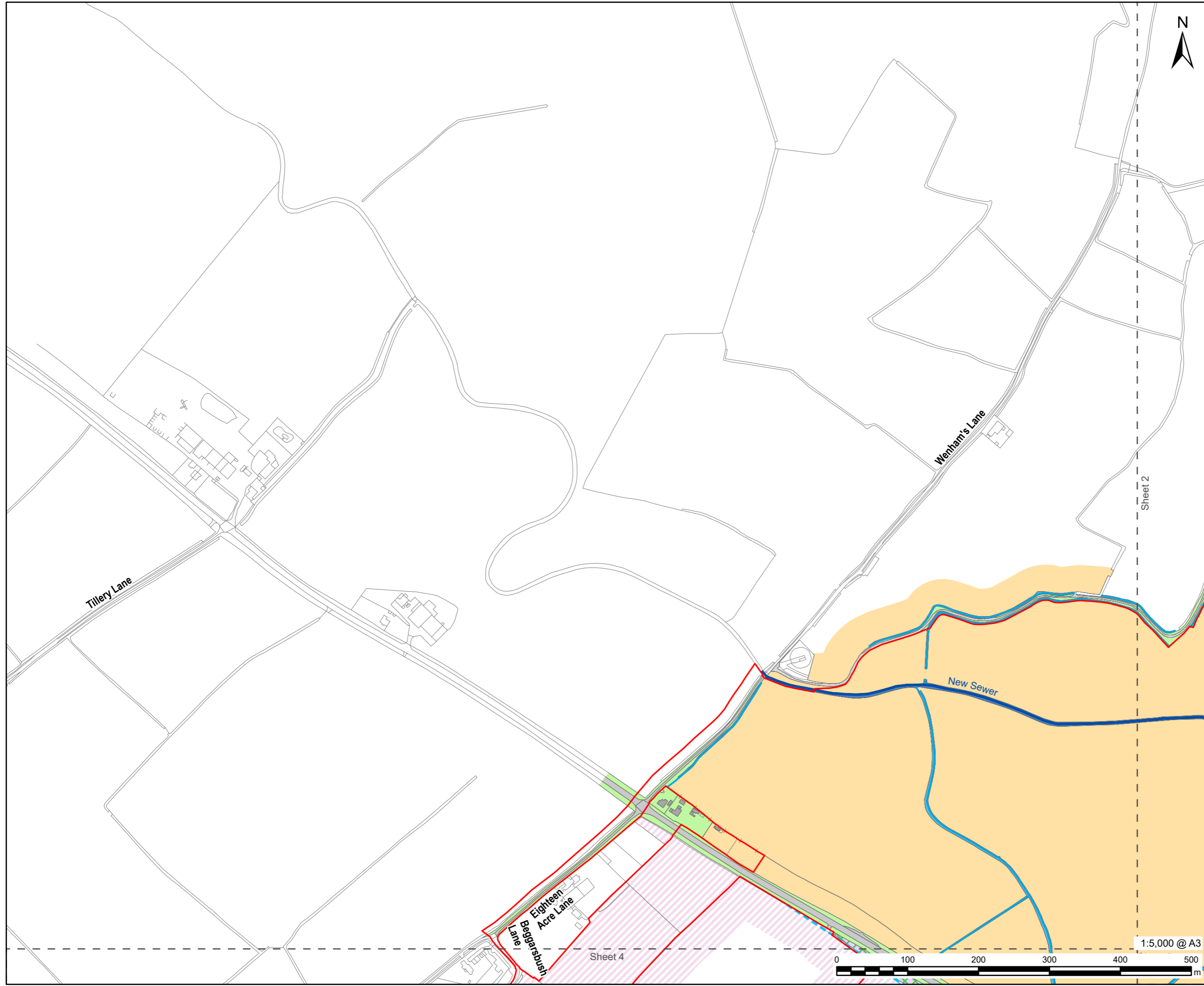
FIGURE TITLE

Location of non-statutorily designated sites and priority habitats within 2 km of the DCO Site Boundary

FIGURE NUMBER

Figure 9-3

This drawing has been prepared for the use of AECOM's client. It may not be used, modified, reproduced or relied upon by third parties, except as signed by AECOM or as required by law. AECOM accepts no responsibility, and denies any liability whatsoever, to any party that uses or relies on this drawing without AECOM's express written consent. Do not scale this document. All measurements must be obtained from the stated dimensions.



PROJECT



CLIENT



CONSULTANT

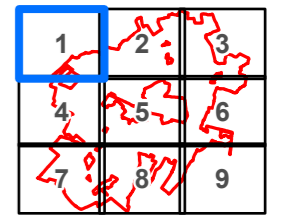
AECOM Limited
3 Rivergate
Bristol, BS1 6EW
www.aecom.com

LEGEND

- DCO Site Boundary
- Cereal Crops
- Modified Grassland
- Mixed Scrub
- Artificial Unvegetated, Unsealed Surface
- Building
- Developed Land; Sealed Surface
- No Walkover Survey Undertaken
- River
- Ditch
- Ditch - Dry
- Fence

Habitat survey data used to inform this figure is correct as of May 2026 and will be further updated following completion of field surveys.

SHEET LAYOUT



NOTES

© Crown Copyright 2026. All rights reserved. Ordnance Survey Licence AC0000808122.

ISSUE PURPOSE

Scoping Report

PROJECT NUMBER

60716220

FIGURE TITLE

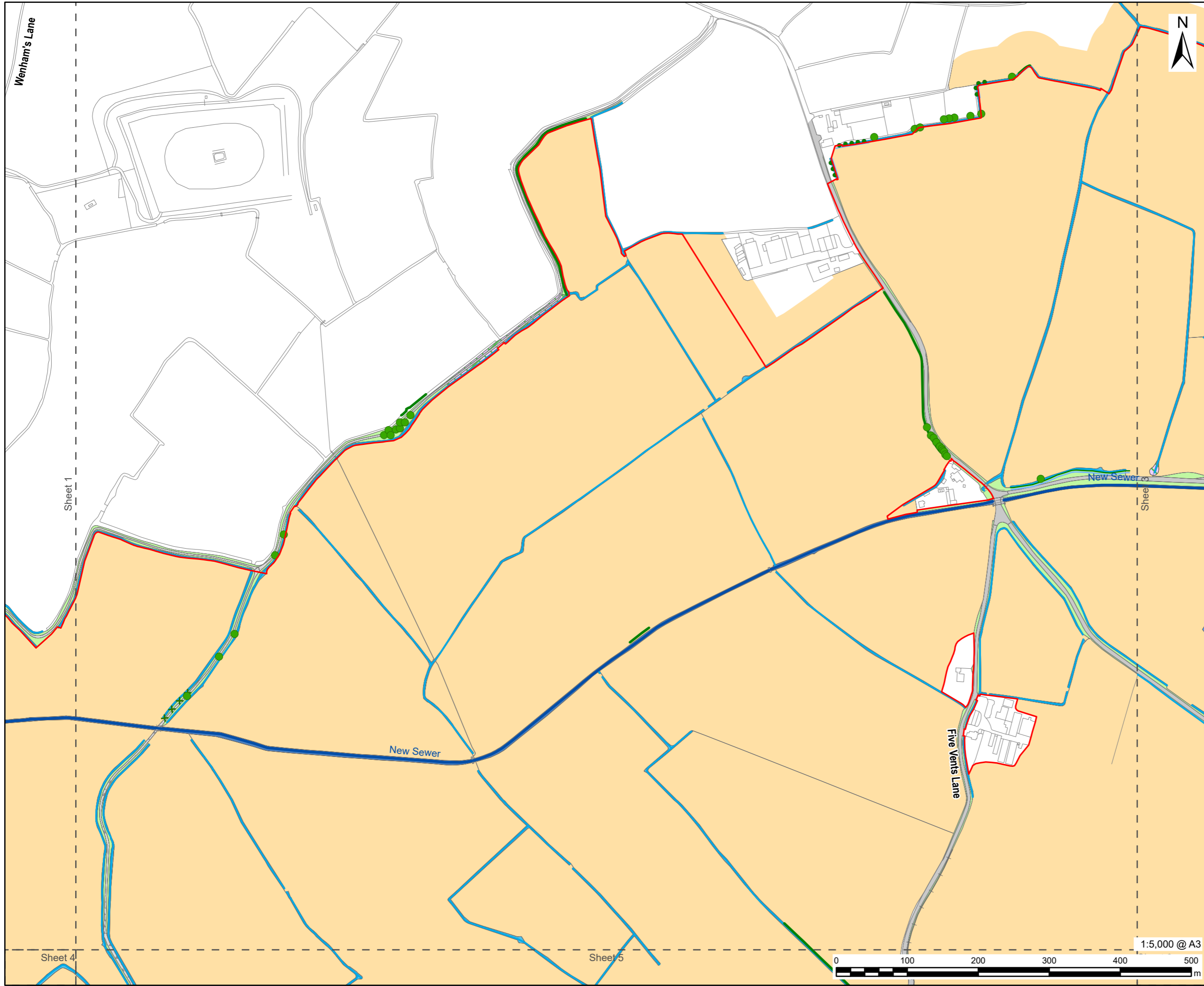
Habitats within the DCO Site Boundary

Sheet 1 of 9

FIGURE NUMBER

Figure 9-4

This drawing has been prepared for the use of AECOM's client. It may not be used, modified, reproduced or relied upon by third parties, except as agreed by AECOM or as required by law. AECOM accepts no responsibility, and denies any liability whatsoever, to any party that uses or relies on this drawing without AECOM's express written consent. Do not scale this document. All measurements must be obtained from the stated dimensions.



PROJECT



CONSULTANT

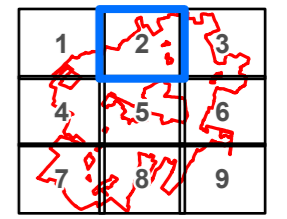
AECOM Limited
3 Rivergate
Bristol, BS1 6EW
www.aecom.com

LEGEND

- DCO Site Boundary
- Cereal Crops
- Modified Grassland
- Bramble scrub
- Mixed Scrub
- Ponds (priority habitat)
- Artificial Unvegetated, Unsealed Surface
- Bare ground
- Developed Land; Sealed Surface
- Line of Trees - Associated with Bank or Ditch
- Scrub Line
- Native Hedgerow
- Native Hedgerow - Associated with Bank or Ditch
- River
- Ditch
- Fence
- Individual Tree

Habitat survey data used to inform this figure is correct as of May 2026 and will be further updated following completion of field surveys.

SHEET LAYOUT



NOTES

© Crown Copyright 2026. All rights reserved. Ordnance Survey Licence AC0000808122.

ISSUE PURPOSE

Scoping Report

PROJECT NUMBER

60716220

FIGURE TITLE

Habitats within the DCO Site Boundary

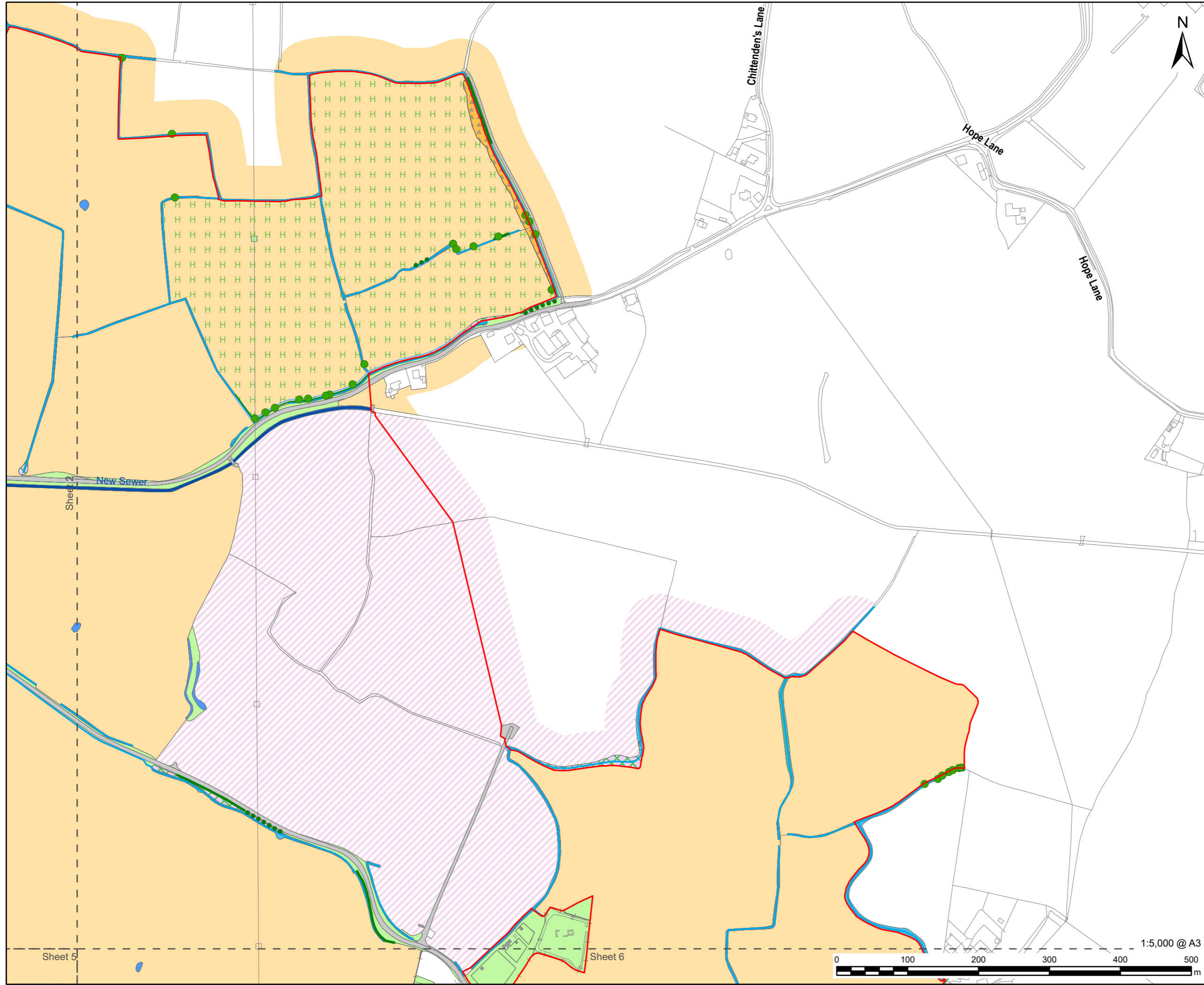
Sheet 2 of 9

FIGURE NUMBER

Figure 9-4



This drawing has been prepared for the use of AECOM's client. It may not be used, modified, reproduced or relied upon by third parties, except as agreed by AECOM or as required by law. AECOM accepts no responsibility, and denies any liability whatsoever, to any party that uses or relies on this drawing without AECOM's express written consent. Do not scale this document. All measurements must be obtained from the stated dimensions.



PROJECT



CLIENT



CONSULTANT

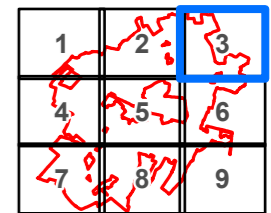
AECOM Limited
3 Rivergate
Bristol, BS1 6EW
www.aecom.com

LEGEND

- DCO Site Boundary
- Arable field margins tussocky
- Cereal Crops
- Horticulture
- Modified Grassland
- Bramble scrub
- Mixed Scrub
- Ponds (priority habitat)
- Building
- Developed Land; Sealed Surface
- Swamp
- No Walkover Survey Undertaken
- Line of Trees
- Line of Trees - Associated with Bank or Ditch
- Native Hedgerow
- Native Hedgerow - Associated with Bank or Ditch
- River
- Ditch
- Fence
- Individual Tree

Habitat survey data used to inform this figure is correct as of May 2026 and will be further updated following completion of field surveys.

SHEET LAYOUT



NOTES

© Crown Copyright 2026. All rights reserved. Ordnance Survey Licence AC0000808122.

ISSUE PURPOSE

Scoping Report

PROJECT NUMBER

60716220

FIGURE TITLE

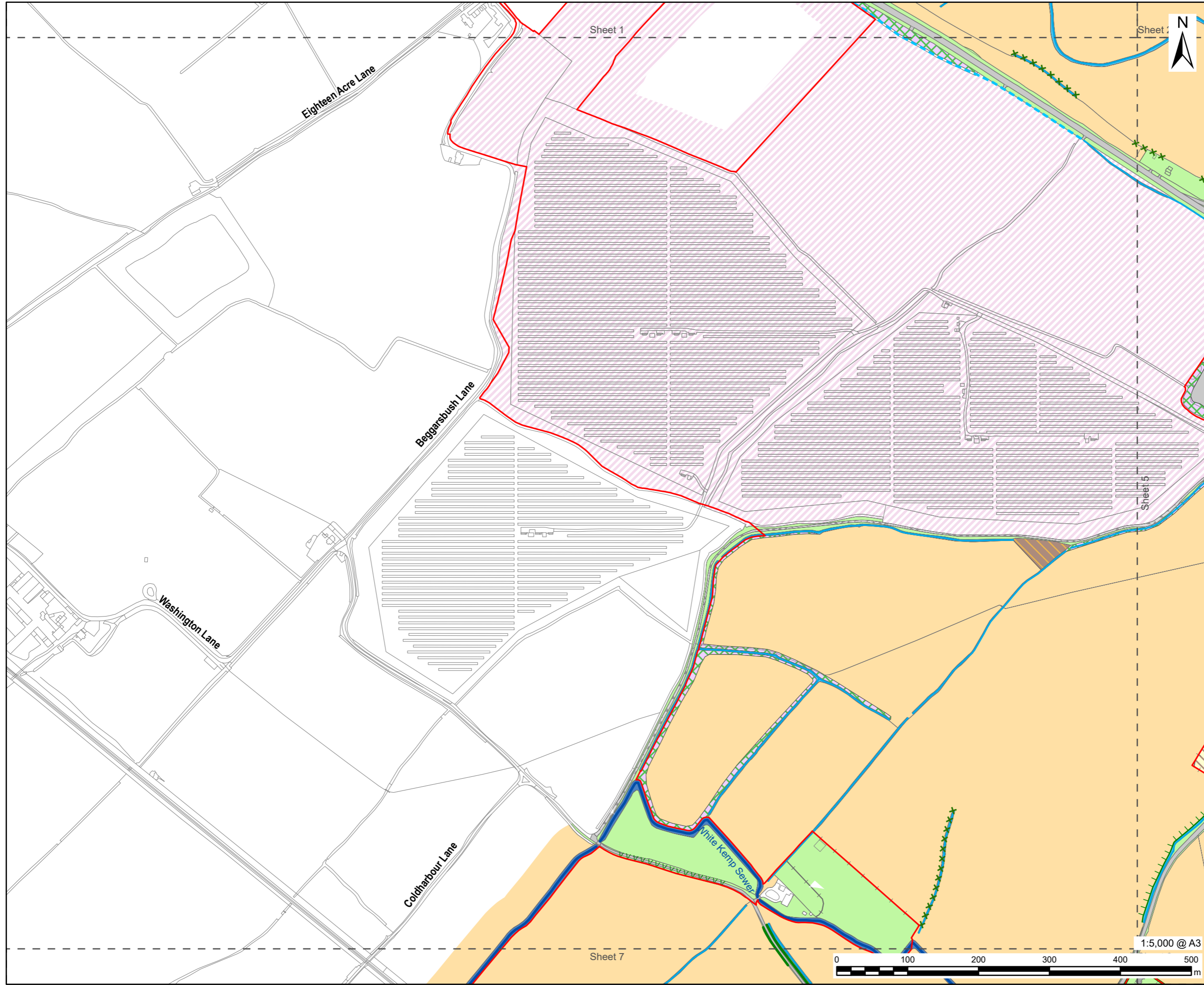
Habitats within the DCO Site Boundary

Sheet 3 of 9

FIGURE NUMBER

Figure 9-4

This drawing has been prepared for the use of AECOM's client. It may not be used, modified, reproduced or relied upon by third parties, except as agreed by AECOM or as required by law. AECOM accepts no responsibility, and denies any liability whatsoever, to any party that uses or relies on this drawing without AECOM's express written consent. Do not scale this document. All measurements must be obtained from the stated dimensions.

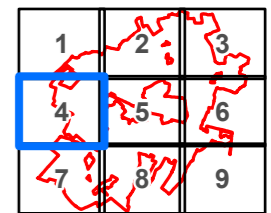


LEGEND

- DCO Site Boundary
- Arable field margins, fallow
- Cereal Crops
- Modified Grassland
- Mixed Scrub
- Ruderal/Ephemeral
- Bare ground
- Building
- Developed Land; Sealed Surface
- Other Woodland; Broadleaved
- No Walkover Survey Undertaken
- x x x Scrub Line
- | | | Native Hedgerow
- | | | Native Hedgerow with Trees
- v v v Species-rich Native Hedgerow
- — — River
- - - Ditch
- - - Ditch - Dry
- + + + Fence

Habitat survey data used to inform this figure is correct as of May 2026 and will be further updated following completion of field surveys.

SHEET LAYOUT



NOTES

© Crown Copyright 2026. All rights reserved.
Ordnance Survey Licence AC0000808122.

ISSUE PURPOSE

Scoping Report

PROJECT NUMBER

60716220

FIGURE TITLE

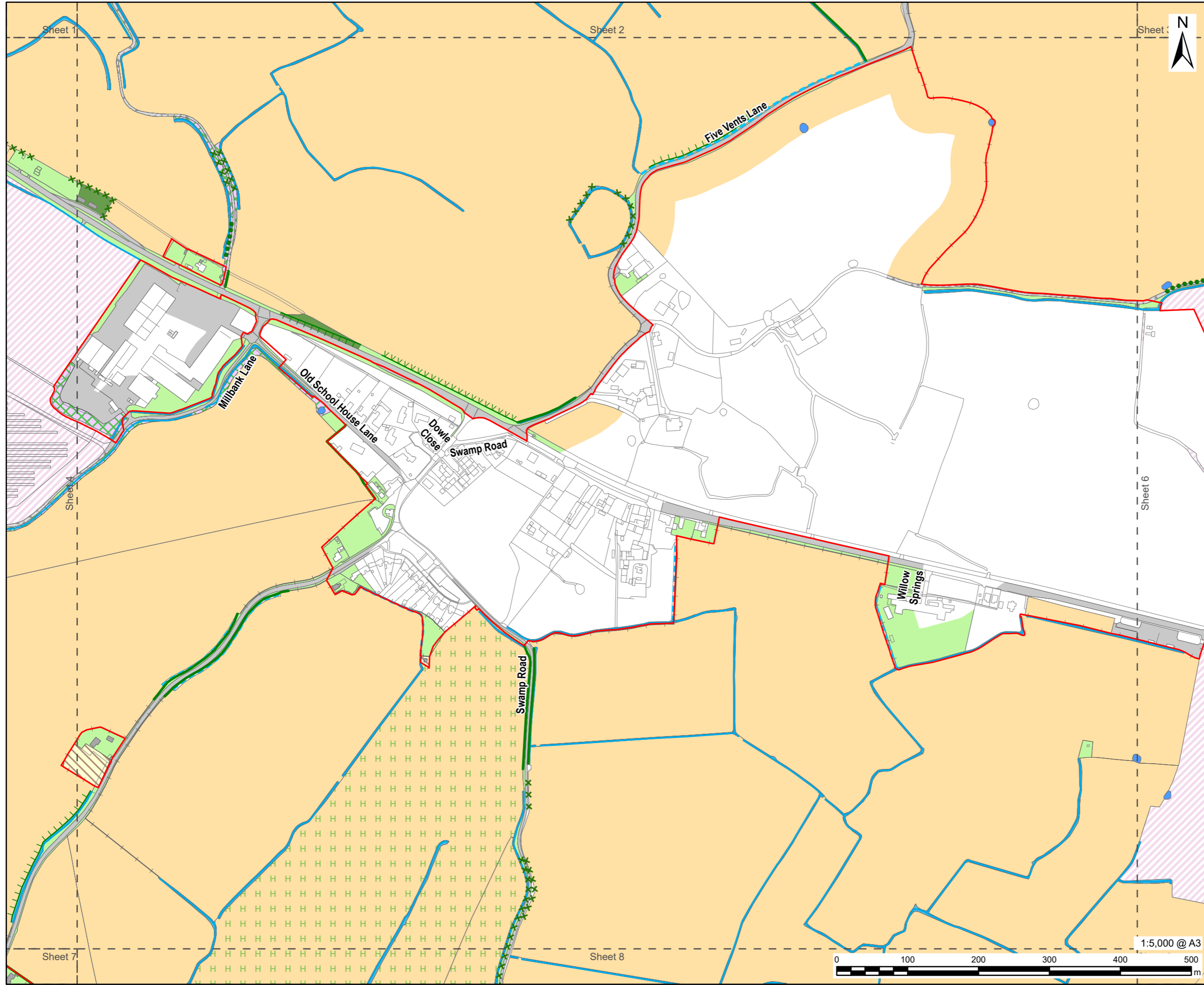
Habitats within the DCO Site Boundary

Sheet 4 of 9

FIGURE NUMBER

Figure 9-4

This drawing has been prepared for the use of AECOM's client. It may not be used, modified, reproduced or relied upon by third parties, except as agreed by AECOM or as required by law. AECOM accepts no responsibility, and denies any liability whatsoever, to any party that uses or relies on this drawing without AECOM's express written consent. Do not scale this document. All measurements must be obtained from the stated dimensions.



AECOM

PROJECT



CLIENT



CONSULTANT

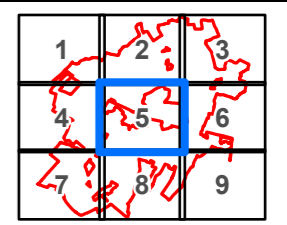
AECOM Limited
3 Rivergate
Bristol, BS1 6EW
www.aecom.com

LEGEND

- DCO Site Boundary
- Cereal Crops
- Horticulture
- Modified Grassland
- Mixed Scrub
- Ponds (priority habitat)
- Ruderal/Ephemeral
- Bare ground
- Building
- Developed Land; Sealed Surface
- Other Woodland; Broadleaved
- No Walkover Survey Undertaken
- Line of Trees
- x x x Scrub Line
- | | | Native Hedgerow
- | | | Native Hedgerow with Trees
- v v v Species-rich Native Hedgerow
- — — Ditch
- - - Ditch - Dry
- — — Fence

Habitat survey data used to inform this figure is correct as of May 2026 and will be further updated following completion of field surveys.

SHEET LAYOUT



NOTES

© Crown Copyright 2026. All rights reserved. Ordnance Survey Licence AC0000808122.

ISSUE PURPOSE

Scoping Report

PROJECT NUMBER

60716220

FIGURE TITLE

Habitats within the DCO Site Boundary

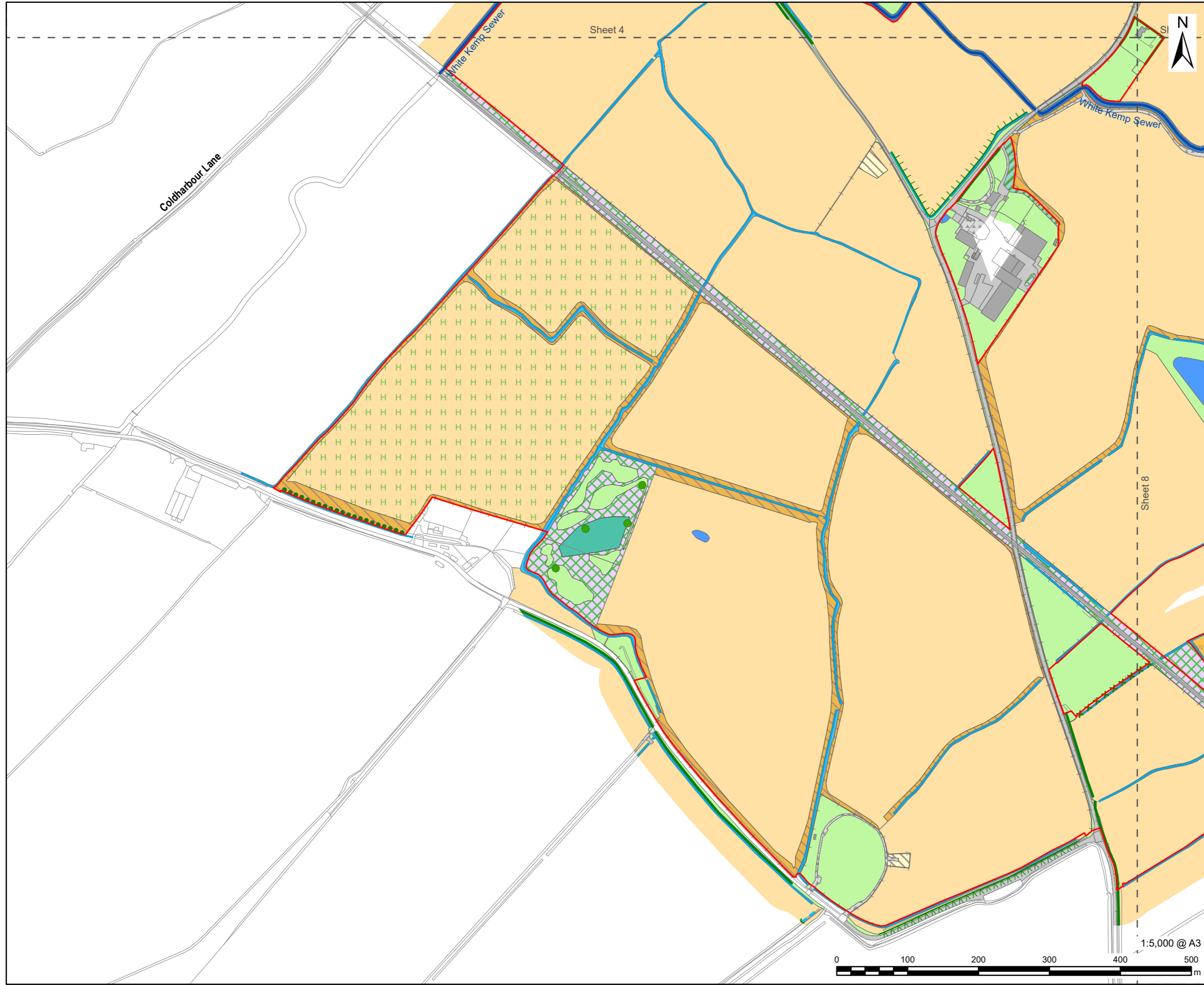
Sheet 5 of 9

FIGURE NUMBER

Figure 9-4



This drawing has been prepared for the use of AECOM's client. It may not be used, modified, reproduced or relied upon by third parties, except as agreed by AECOM or as required by law. AECOM accepts no responsibility, and denies any liability whatsoever, to any party that uses or relies on this drawing without AECOM's express written consent. Do not scale this document. All measurements must be obtained from the stated dimensions.



PROJECT



CLIENT



CONSULTANT

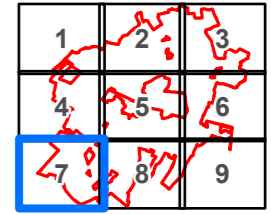
AECOM Limited
3 Rivergate
Bristol, BS1 6EW
www.aecom.com

LEGEND

- DCO Site Boundary
- Arable field margins
- Arable Field Margins Wild Bird Mix
- Cereal Crops
- Horticulture
- Modified Grassland
- Mixed Scrub
- Ponds (priority habitat)
- Ruderal/Ephemeral
- Bare ground
- Building
- Developed Land; Sealed Surface
- Swamp
- Other Woodland; Mixed
- Line of Trees
- xxx Scrub Line
- |—|—| Native Hedgerow
- |—|—| Native Hedgerow with Trees
- vvv Species-rich Native Hedgerow
- River
- Ditch
- - - Ditch - Dry
- |—|—| Fence
- Individual Tree

Habitat survey data used to inform this figure is correct as of May 2026 and will be further updated following completion of field surveys.

SHEET LAYOUT



NOTES

© Crown Copyright 2026. All rights reserved. Ordnance Survey Licence AC0000808122.

ISSUE PURPOSE

Scoping Report

PROJECT NUMBER

60716220

FIGURE TITLE

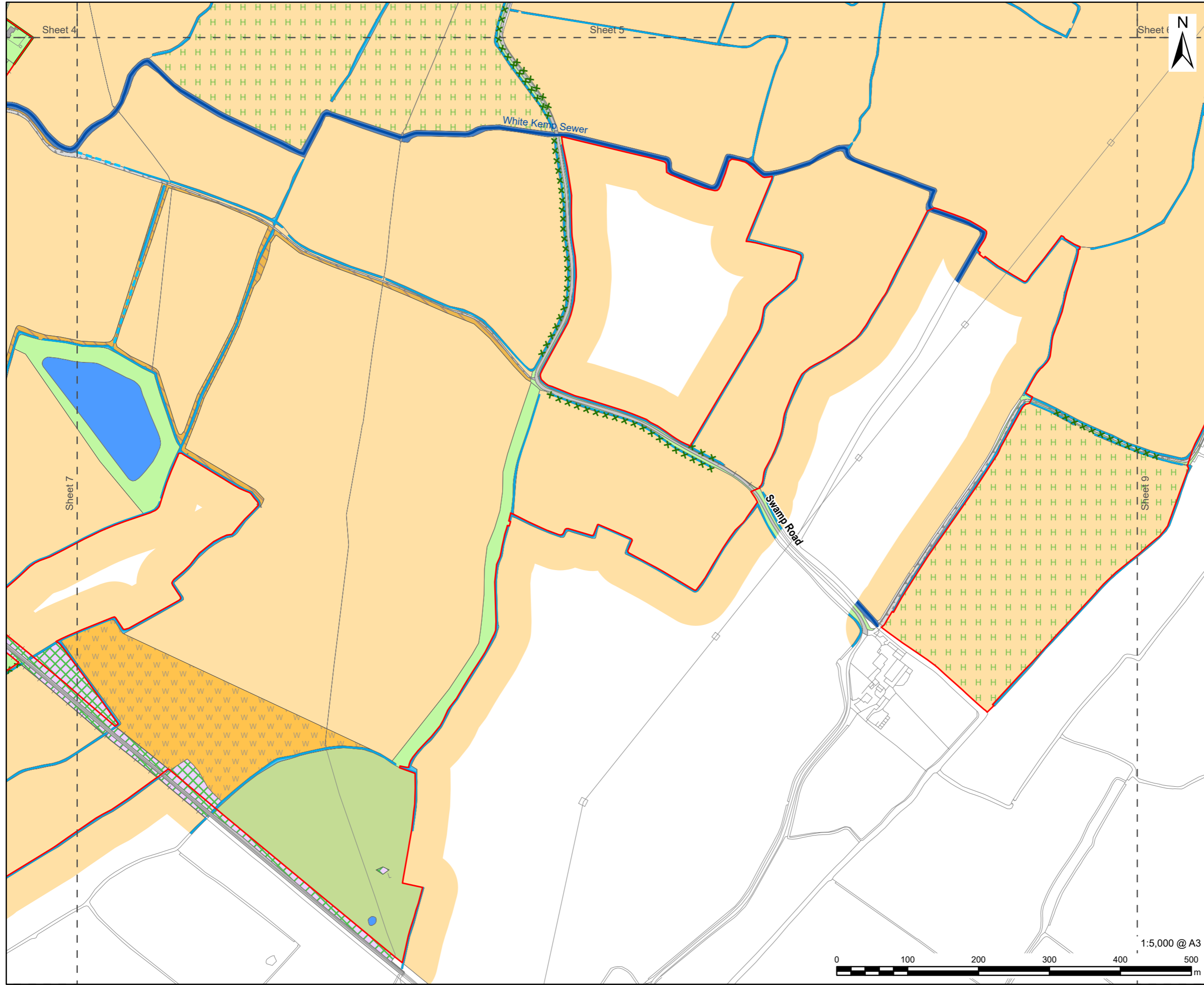
Habitats within the DCO Site Boundary

Sheet 7 of 9

FIGURE NUMBER

Figure 9-4

This drawing has been prepared for the use of AECOM's client. It may not be used, modified, reproduced or relied upon by third parties, except as agreed by AECOM or as required by law. AECOM accepts no responsibility, and denies any liability whatsoever, to any party that uses or relies on this drawing without AECOM's express written consent. Do not scale this document. All measurements must be obtained from the stated dimensions.



PROJECT



CLIENT



CONSULTANT

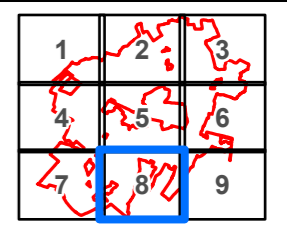
AECOM Limited
3 Rivergate
Bristol, BS1 6EW
www.aecom.com

LEGEND

- DCO Site Boundary
- Arable field margins
- Arable Field Margins Wild Bird Mix
- Cereal Crops
- Horticulture
- Modified Grassland
- Other Neutral Grassland
- Mixed Scrub
- Ponds (priority habitat)
- Bare ground
- Building
- Developed Land; Sealed Surface
- Scrub Line
- Native Hedgerow
- River
- Ditch
- Ditch - Dry
- Fence

Habitat survey data used to inform this figure is correct as of May 2026 and will be further updated following completion of field surveys.

SHEET LAYOUT



NOTES

© Crown Copyright 2026. All rights reserved.
Ordnance Survey Licence AC0000808122.

ISSUE PURPOSE

Scoping Report

PROJECT NUMBER

60716220

FIGURE TITLE

Habitats within the DCO Site Boundary

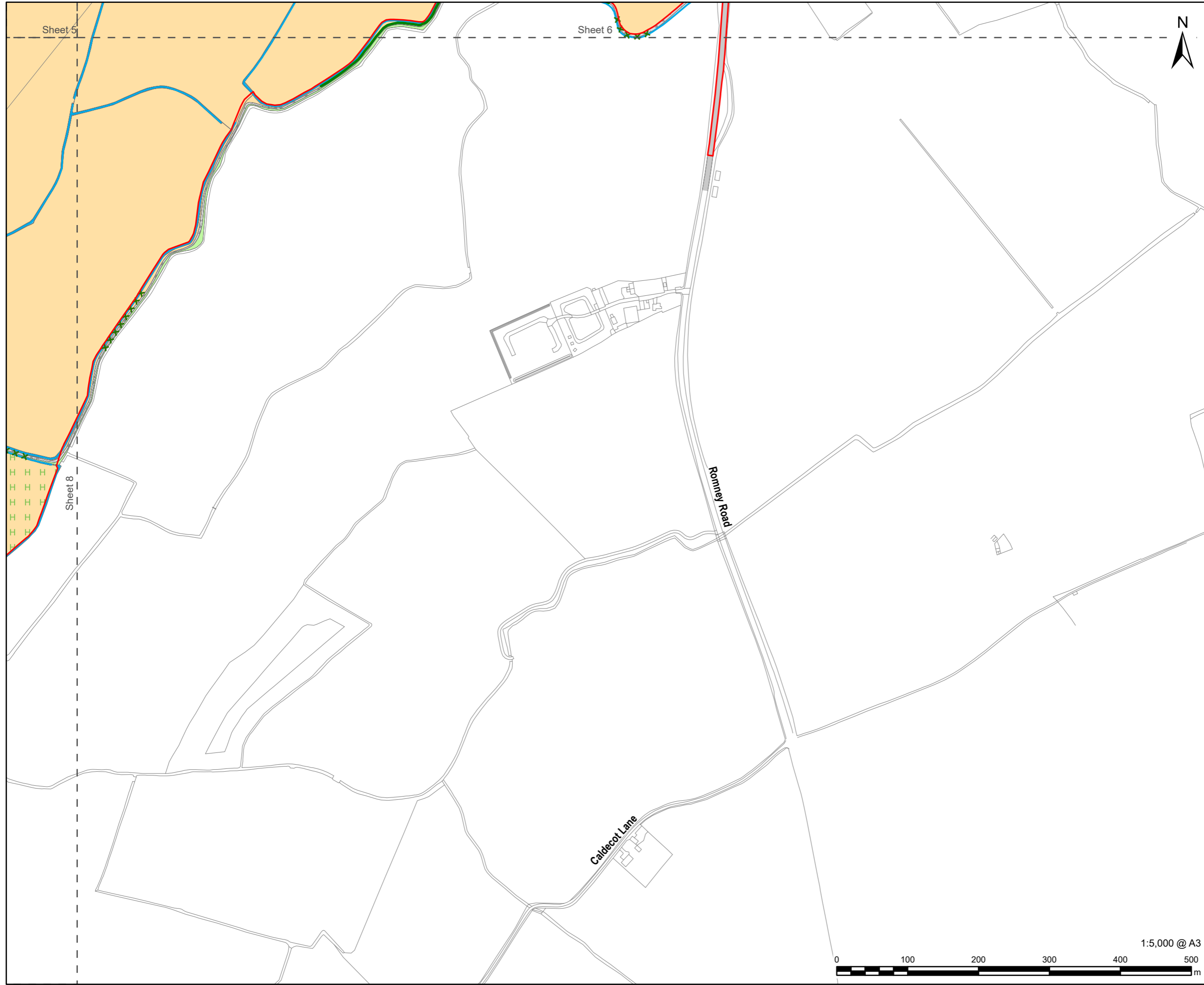
Sheet 8 of 9

FIGURE NUMBER

Figure 9-4



This drawing has been prepared for the use of AECOM's client. It may not be used, modified, reproduced or relied upon by third parties, except as agreed by AECOM or as required by law. AECOM accepts no responsibility, and denies any liability whatsoever, to any party that uses or relies on this drawing without AECOM's express written consent. Do not scale this document. All measurements must be obtained from the stated dimensions.



PROJECT



CLIENT



CONSULTANT

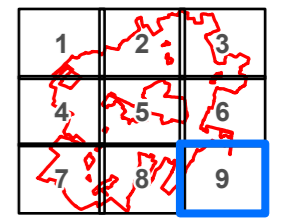
AECOM Limited
3 Rivergate
Bristol, BS1 6EW
www.aecom.com

LEGEND

- DCO Site Boundary
- Cereal Crops
- Horticulture
- Modified Grassland
- Bare ground
- Developed Land; Sealed Surface
- x x x Scrub Line
- Native Hedgerow
- Ditch

Habitat survey data used to inform this figure is correct as of May 2026 and will be further updated following completion of field surveys.

SHEET LAYOUT



NOTES

© Crown Copyright 2026. All rights reserved.
Ordnance Survey Licence AC0000808122.

ISSUE PURPOSE

Scoping Report

PROJECT NUMBER

60716220

FIGURE TITLE

Habitats within the DCO Site Boundary

Sheet 9 of 9

FIGURE NUMBER

Figure 9-4



This drawing has been prepared for the use of AECOM's client. It may not be used, modified, reproduced or relied upon by third parties, except as agreed by AECOM or as required by law. AECOM accepts no responsibility, and denies any liability whatsoever, to any party that uses or relies on this drawing without AECOM's express written consent. Do not scale this document. All measurements must be obtained from the stated dimensions.